

ALCOSENS SYSTEMS

ONLINE DETERMINATION OF ALCOHOL

ALCOSENS PROBE AND TRANSMITTER



Characteristics:

- Online determination of alcohol or other volatiles
- Measuring of alcohol concentration in liquids
- Design for cleaning (CIP) and sterilisation (SIP)
- Customized probe geometries available
- Transmitter/controller for up to 8 probes
- Touchscreen for visualisation and calibration
- Interface to central PLC and SCADA systems
- GMP documentation on demand

ALCOSENS SYSTEMS

ETHANOL AND METHANOL MONITORING AND CONTROL

ALCOSENS Applications

ALCOSENS systems are the standard automation equipments for alcohol determination in a number of fermentations such as industrial yeast fermentation and acetic acid fermentation. The ALCOSENS technology is also widely used for the online measurement of methanol and the sophisticated control of processes with recombinant methylotrophic yeasts.

- Methanol monitoring and control in *Pichia pastoris* fermentation in fed batch mode
- Ethanol control in baker's yeast production
- Control of ethanol concentration in acetic acid fermentation
- Process optimization in brewers yeast propagation
- Observing dealcoholization of beer
- Applications in bioethanol plants



Transmitter S7 Control Cabinet with Touch Panel



ALCOSENS Standard Probe for 25 mm Port, side wall mounting



ALCOSENS Customized Probe for 19 mm Port, headplate mounting



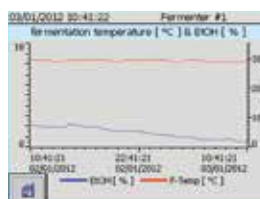
ALCOSENS G Customized Probe for GMP Applications

Probe Geometries and Transmitter Configurations

ALCOSENS probes are available in different geometrical configurations and with different port adapters. In combination with the TRANSMITTER S7 MULTI for up to 8 probes the system can be used for small scale parallel bioreactors, too.

General Specifications

Measuring range:	0.06 – 6 % (v/v)
Transmitter output:	4 – 20 mA / 0 - 10 V
Sensor:	Metal oxide semiconductor
Probe body:	AISI 316L
Membrane:	Silicone
Probe adaptor:	19 mm / 25 mm port
Lengths of probe:	105 / 120 / 220 / 320 mm
Max. pressure:	2.5 bar
Temperature:	20 – 143 °C (for sterilisation only)
Carrier gas supply:	20 mL / min (synthetic or purified air)



Interface of ALCOSENS TRANSMITTER S7 MULTI with Overview, Calibration and Trend Window